



# **DEPUMP TECHNOLOGY**

## **Pumps Brief Introduction**

**Shirley S.**

Sales manager

DEPUMP TECHNOLOGY SJZ CO., LTD.

p:86-312-6795175 m: 86 139 3227 8621

f:86-312-3085383 whats ap: 86 139 3227 8621

a:South Industrial Park, Baoding, China

w:[www.deonpump.com](http://www.deonpump.com)

e: [admin@deonpump.cn](mailto:admin@deonpump.cn)/ [admin@deonpump.com](mailto:admin@deonpump.com)



### Material:

- High chrome
- Rubber
- Polyurethane
- Ceramic

### Application

- Mining
- Power plant
- Coal washing plant
- Coal mining
- River dredging
- River desilting
- Environmental protection



Pump size: 1 inch (25mm) ---18 inch (450mm)  
discharge

Capacity: 10.8 to 6500 m<sup>3</sup>/hour  
(48-28600USGPM)

Head: up to 125 meters (410ft)



The DEPUMP range of Dredge and Gravel pumps is designed to provide continuous pumping of highly abrasive slurries containing large particles at high maintained efficiencies with low maintenance and ownership costs.

## Application

- Continuous transportation
- Dredging
- Sand suction
- River dredging
- Nining
- Metal smelting slag transportation

### Material:

- High chrome







### Material:

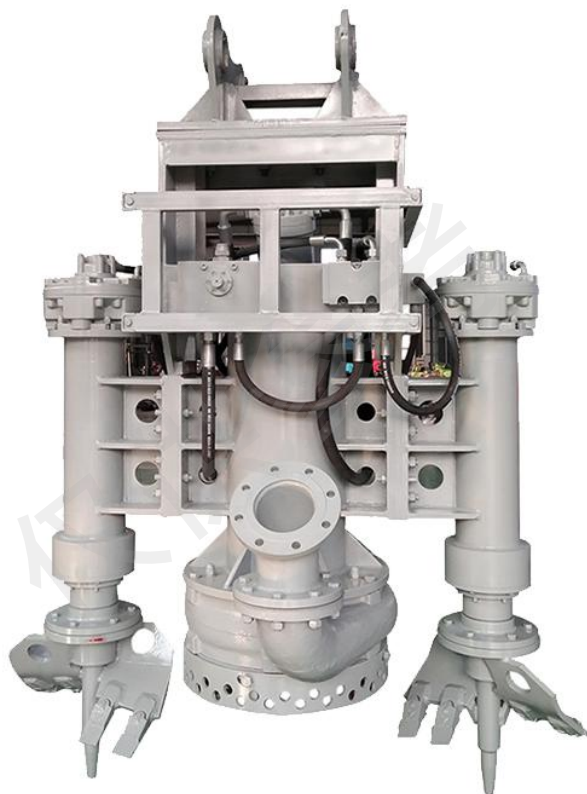
- High chrome
- Rubber

## Application

- Thermal power plant
- Coal gas coking plant
- Oil refinery
- Steel-making plant
- Mining
- Paper industry
- Cement plant
- Food factory
- Printing and
- Dyeing industry to suck the flowing sludge of thick liquid

Pump size: DN40 to DN250 discharge  
Capacity: 5-350m<sup>3</sup>/h (79-5540 USGPM)  
Head: up to 40 meters (130ft).  
Max particle size: 50mm.





## Application

- Mining
- Power plant
- Sand dredging
- River desilting
- Environmental protection

### Material:

- Standard: High chrome
- A49

## ELECTRIC DRIVEN/ HYDRAULIC DRIVEN



Pump size

DN80- DN400 (3.15 - 16 inches) discharge

Capacity

23-2400m<sup>3</sup>/h (100-10560USGPM)

Head

up to 64m(210ft).

Max particle size

Pumps can pass solids up to 60mm (2.4 inches) in diameter



## Application

- Hotels
- Hospitals
- Construction
- Municipal engineering
- Mining enterprises
- Dam dewatering



Size: DN50-DN600 (2inch-24inch)

Max capacity: 6000m<sup>3</sup>/h

Max head: 62m

Liquid: Fibers, woodpcs, papers, etc

Material: Cast Iron, Stainless Steel



## Material:

- Standard: cast iron
- SS304
- SS316
- Duplex stainless steel



IS/IH/ISA/ISO/ISW series single-stage end-suction (axial intake) centrifugal pump

## Application

- High-rise building water supply and Drainage
- Sprinkler irrigation, Metallurgy
- Municipal, Mine water treatment
- Sewage, Food, Chemical
- Air conditioning

## Material:

- Standard: cast iron
- Cast steel
- SS304
- SS316
- Duplex stainless steel
- Bronze impeller

IS/IH ▶



◀  
ISW/ISA



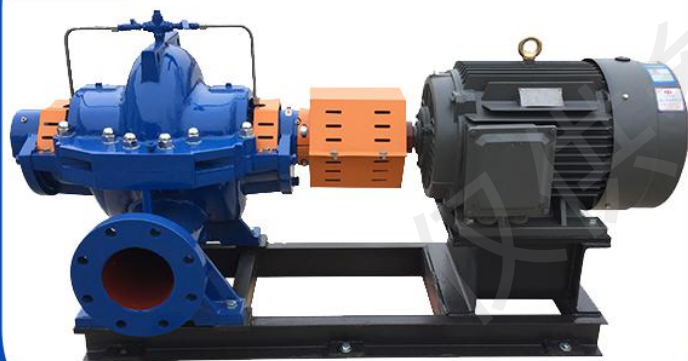
S/XS type pump is a single-stage double-suction horizontal split centrifugal pump.

XSL type VERTICAL split casing water pump

XSL



S/XS



### Material:

- Standard: cast iron
- Cast steel
- SS304
- SS316
- Duplex stainless steel
- Bronze impeller

## Application

- Mines
- Cities and Power stations
- Farmland drainage
- Irrigation
- Various water conservancy projects





D type for High Pressure Multistage Pump  
Temperature up to 80 degree

DG type for Boiler Feed Multistage Pump  
Temperature up to 150 degree

## Application

- Water supply
- Drainage of urban high-rise buildings and
- Fire-fighting water,
- Factory and
- Mine water supply
- Drainage

## Material:

- Standard: cast iron
- Cast steel
- SS304
- SS316
- Duplex stainless steel
- Bronze impeller



ZW

**Material:**

- Standard: cast iron
- Cast steel
- SS304
- SS316
- Duplex stainless steel

ZX

**Application**

- Urban environmental protection
- Construction
- Fire protection
- Chemical industry
- Pharmaceutical







DEPUMP P series Self-priming centrifugal are heavy duty solids-handling, high head pumps with advanced design and maintenance features.

### Material:

- Standard: cast iron
- SS304
- SS316
- Duplex stainless steel

### Application

- Sewage treatment,
- Chemical industry,
- Petroleum,
- Pharmaceutical,
- Mining,
- Papermaking,
- Power plant and
- Municipal sewage engineering,
- Public facilities sewage,
- Pond culture and other industries

Medium temperature: Normal temperature  $-15 \sim 70^{\circ}\text{C}$  ;

Hot Water  $-15 \sim 120^{\circ}\text{C}$  ;

Flow range:  $0.4 \sim 50 \text{ m}^3/\text{h}$

Medium pH range: PH 3 to 11;

The maximum ambient temperature:  $40^{\circ}\text{C}$  ;

The highest altitude: 1000m; (Higher than either altitude 1000m the order put forward in time)

Minimum inlet pressure:  $-6 \text{ m}$

Maximum working pressure:  $2.5 \text{ MPa}$ .

## Application

- High-rise buildings,
- Fire-fighting/ Jockey pump
- Boiler water supply
- Cooling water system
- Various flushing fluid transportation



## Material:

- Standard: cast iron
- SS304
- SS316
- Duplex stainless steel





